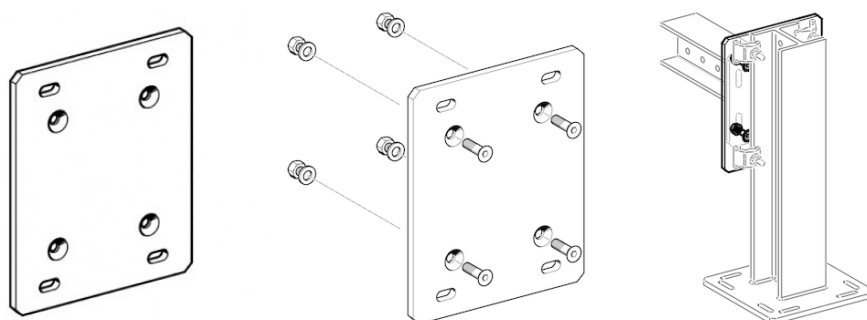


JOINING PLATE AP - prosystemitalia.com

JOINING PLATE AP

- Group A630E



Application

Interface element to enable the connection of standard endplates of Beam Brackets TKO F80 or F100, TKO 100 or 120 to primary steel with flange width >120 mm.

Scope of delivery

Joining Plate AP assembled with:

- 4 Countersink Screws M12 x 40;
- 4 Hexagon Nuts M12;
- 4 Washers.

Installation

Connect the Joining Plate AP to the Beam Bracket TKO's end plate by using the accessories above. Then continue with either heavy-duty anchors or Assembly Set 5P/Beam Clips as required by the building structure.

Technical Data

Type	Dimension of Base Plate L x B [mm]	Perforation for	Connection to flange width [mm]
AP 121/160	320 x 260 x 12	M12	121 - 160
AP 161/200	320 x 310 x 12	M16	161 - 200
AP 201/300	420 x 220 x 12	M16	201 - 300
AP 301/310	440 x 220 x 12	M16	301 - 310

Material:

- Joining Plate: Steel, hot-dipped galvanised;
- Bolts: Steel DIN 7991, class 8.8, Dacromet/delta seal;
- Nuts: Steel, class 8, hot-dipped galvanised;
- Washers: Steel, hot-dipped galvanised.

Tipo	Kg	Pezzi per confezione	Codice Articolo
AP 121/160	7.85	1	183953
AP 161/200	9.34	1	183962
AP 161/200	10.4	1	116534
AP 161/200	8.4	1	117767